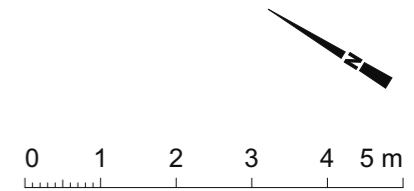


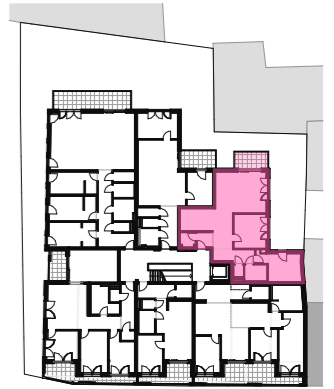
TOP 5



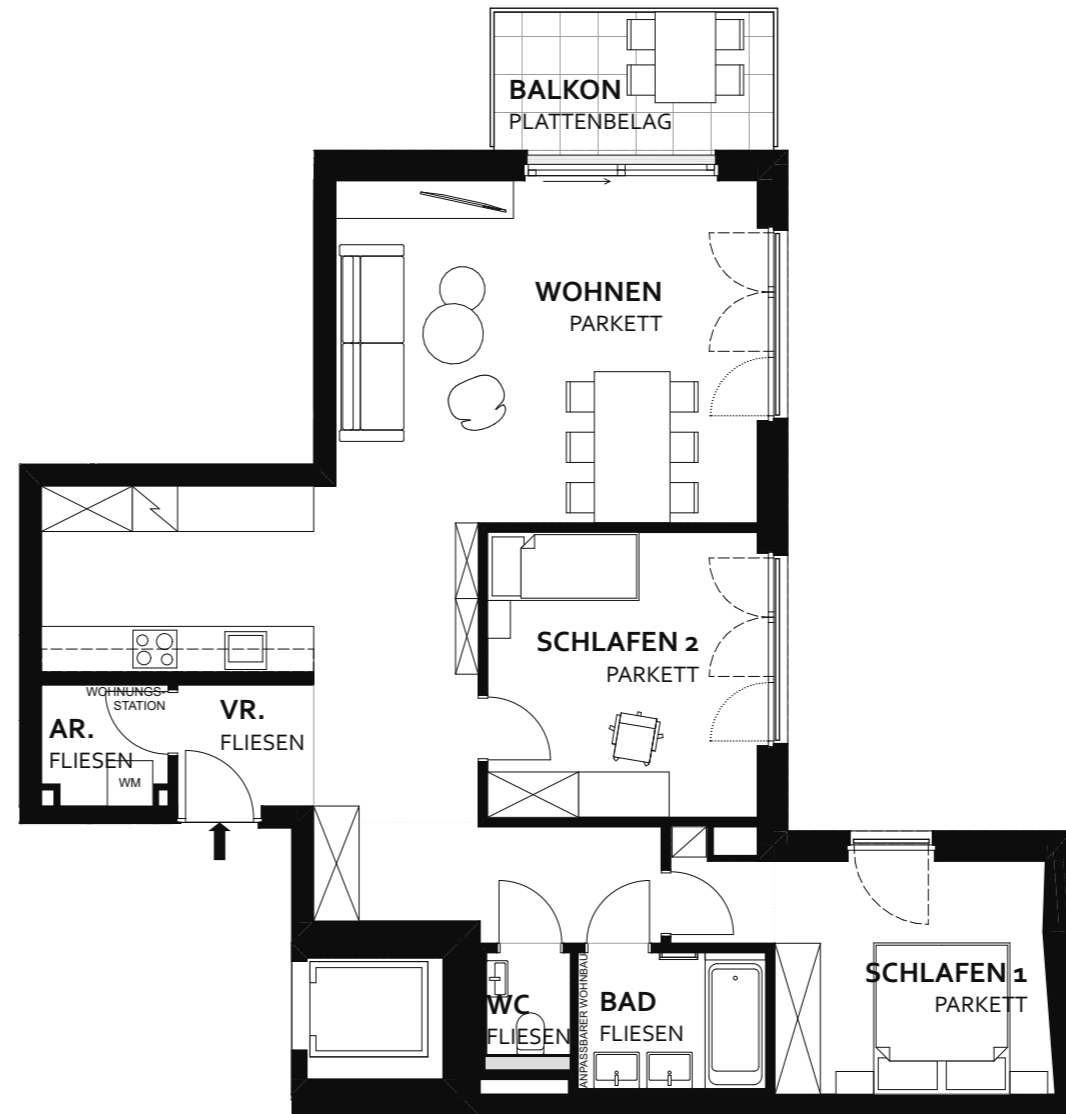
AR	2,52 m ²
BAD	5,63 m ²
KOCHEN	6,46 m ²
SCHLAFEN 1	14,13 m ²
SCHLAFEN 2	10,99 m ²
VR.	9,77 m ²
WC	2,06 m ²
WOHNEN	42,60 m ²

GESAMT	94,16 m²
TERRASSE	21,25 m ²
EIGENGARTEN	96,25 m ²
KA 5	1,87 m ²





Heinrich-Gruber-Straße

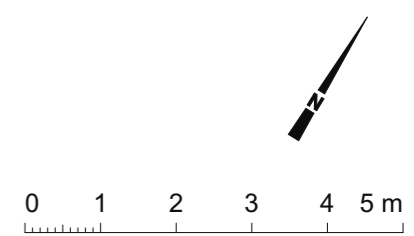


TOP 9



AR.	2,55 m ²
BAD	4,45 m ²
SCHLAFEN 1	12,82 m ²
SCHLAFEN 2	13,44 m ²
VR.	2,88 m ²
WC	1,49 m ²
WOHNEN	49,39 m ²

GESAMT	87,02 m²
BALKON	6,77 m ²
KA 9	1,88 m ²



down traun

TOP 10



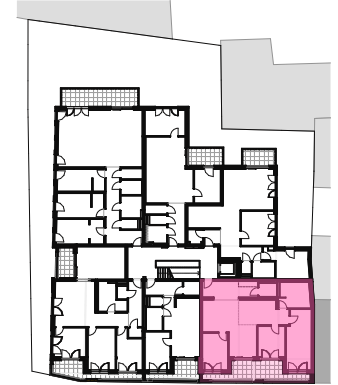
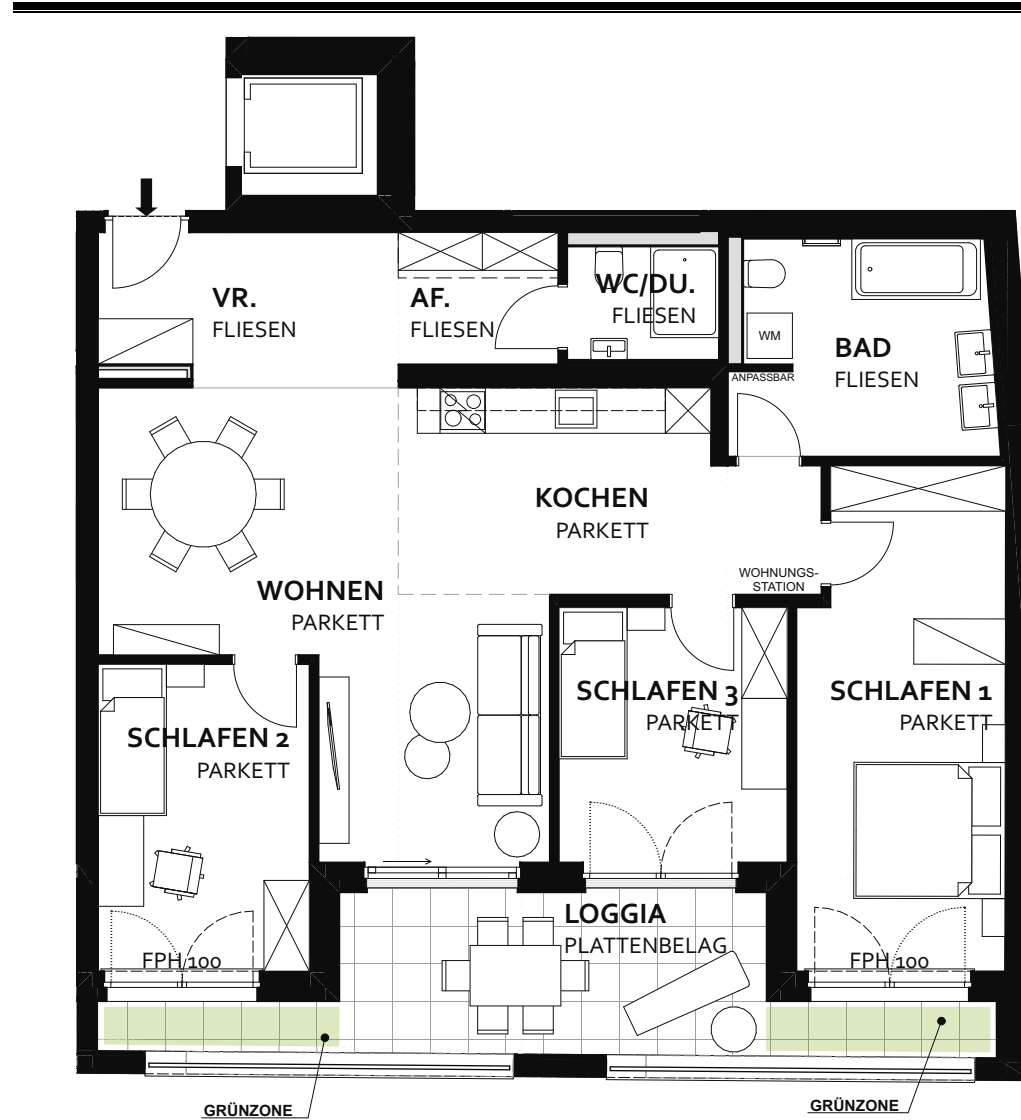
AF.	1,27 m ²
BAD	9,62 m ²
KOCHEN	13,76 m ²
SCHLAFEN 1	17,59 m ²
SCHLAFEN 2	11,32 m ²
SCHLAFEN 3	10,16 m ²
VR.	10,16 m ²
WC/DU.	2,98 m ²
WOHNEN	23,97

GESAMT 100,83 m²

LOGGIA 16,43 m²

KA 10 1,76 m²

TOP 10
1.OBERGESCHOSS
Heinrich-Gruber-Str. 4
4050 Traun



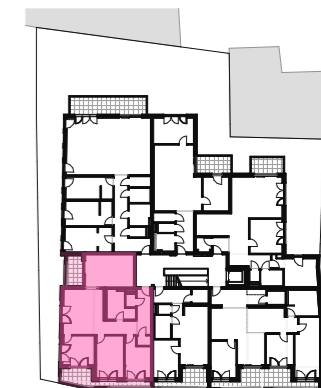
Heinrich-Gruber-Straße

TOP 12

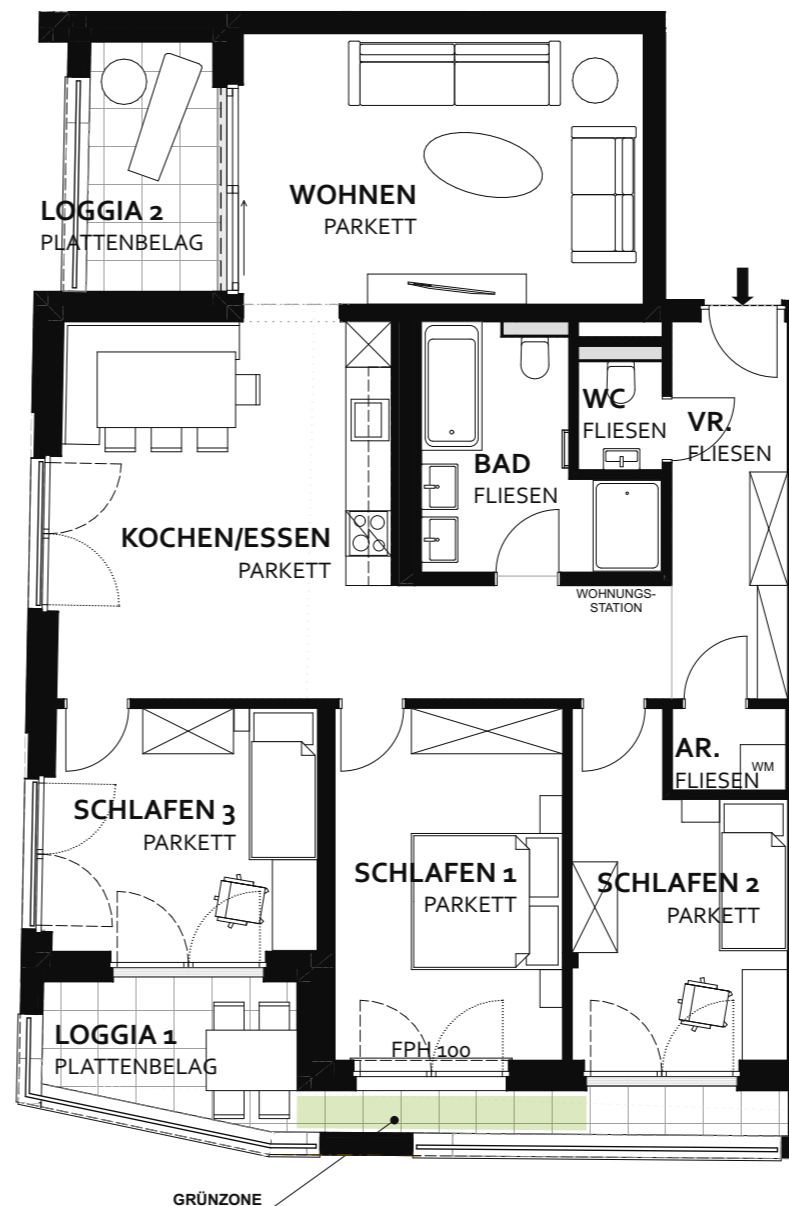


AR.	1,62 m ²
BAD	7,80 m ²
KOCHEN/ESSEN	27,40 m ²
SCHLAFEN 1	14,02 m ²
SCHLAFEN 2	11,26 m ²
SCHLAFEN 3	11,19 m ²
VR.	7,64 m ²
WC	1,59 m ²
WOHNEN	18,95 m ²

GESAMT	101,47 m²
LOGGIA 1	9,44 m ²
LOGGIA 2	5,51 m ²
KA 12	1,88 m ²



Heinrich-Gruber-Straße



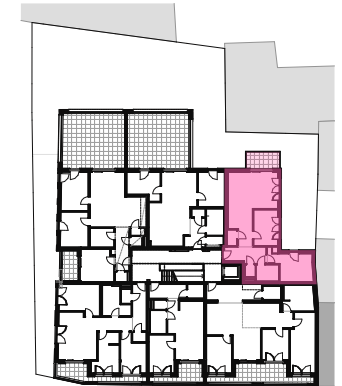
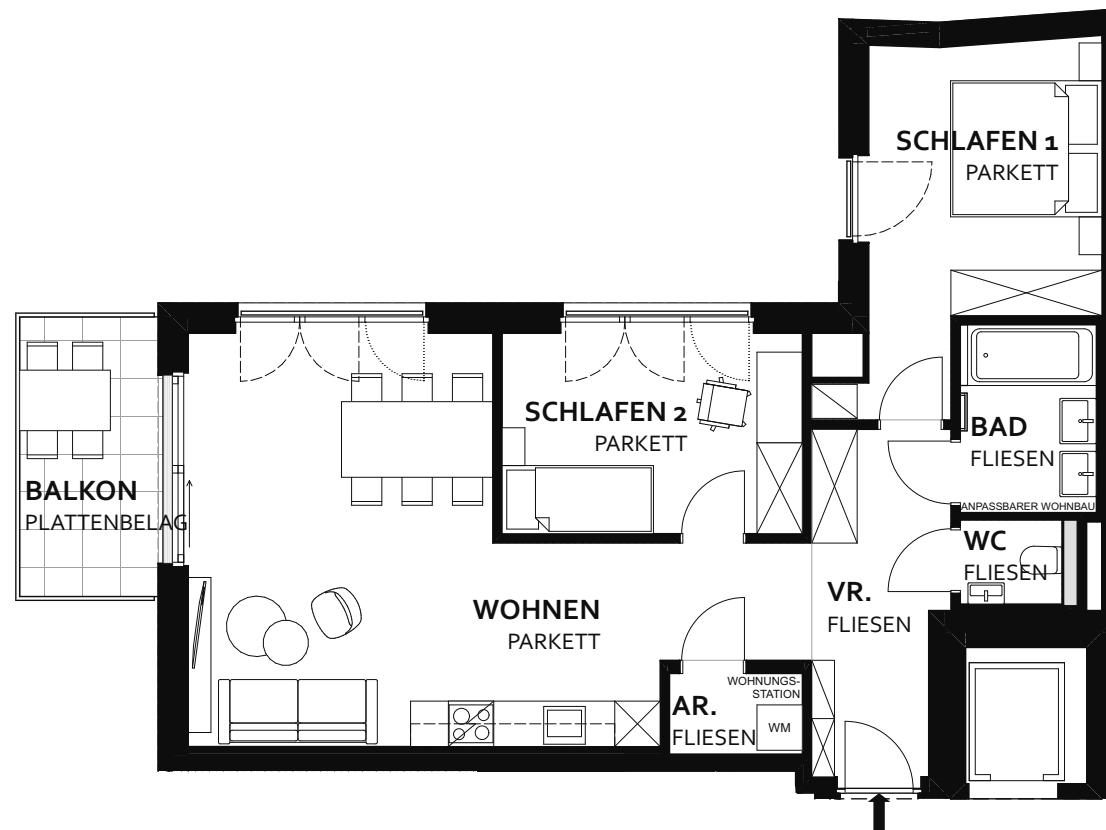
TOP 15



AR.	1,87 m ²
BAD	4,45 m ²
SCHLAFEN 1	12,97 m ²
SCHLAFEN 2	10,52 m ²
VR.	7,80 m ²
WC	1,49 m ²
WOHNEN	31,07 m ²

GESAMT	70,17 m²
BALKON	6,77 m ²
KA 15	2,12 m ²

TOP 15
2.OBERGESCHOSS
Heinrich-Gruber-Str. 4
4050 Traun

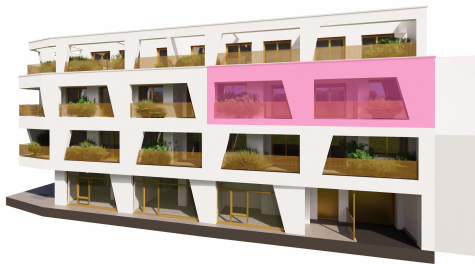


Heinrich-Gruber-Straße



down town

TOP 16



AF.	1,27 m ²
BAD	9,62 m ²
KOCHEN	13,76 m ²
SCHLAFEN 1	17,59 m ²
SCHLAFEN 2	11,32 m ²
SCHLAFEN 3	10,16 m ²
VR.	10,16 m ²
WC/DU.	2,98 m ²
WOHNEN	23,97

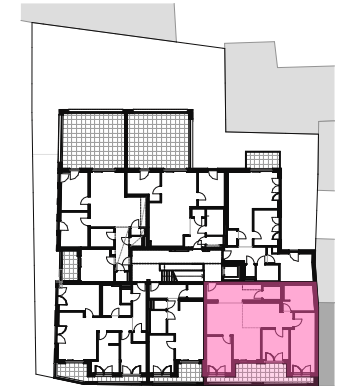
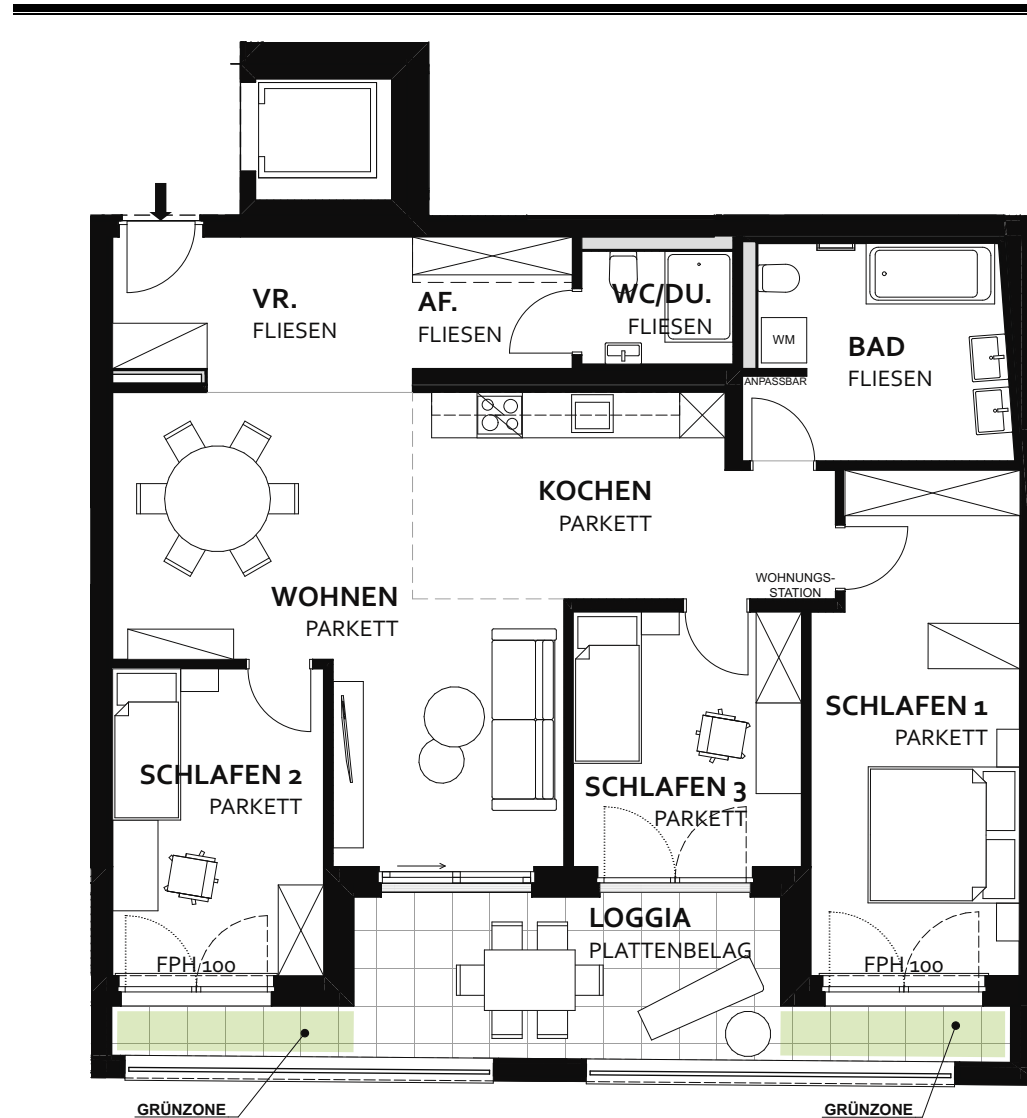
GESAMT 100,83 m²

LOGGIA 16,43 m²

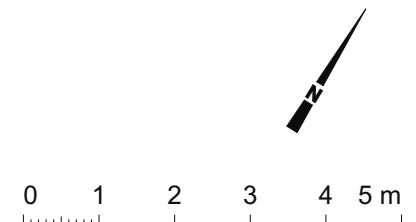
KA 16 2,18 m²

TOP 16

2.OBERGESCHOSS
Heinrich-Gruber-Str. 4
4050 Traun



Heinrich-Gruber-Straße



TOP 18

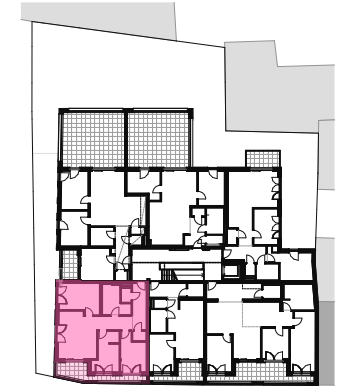
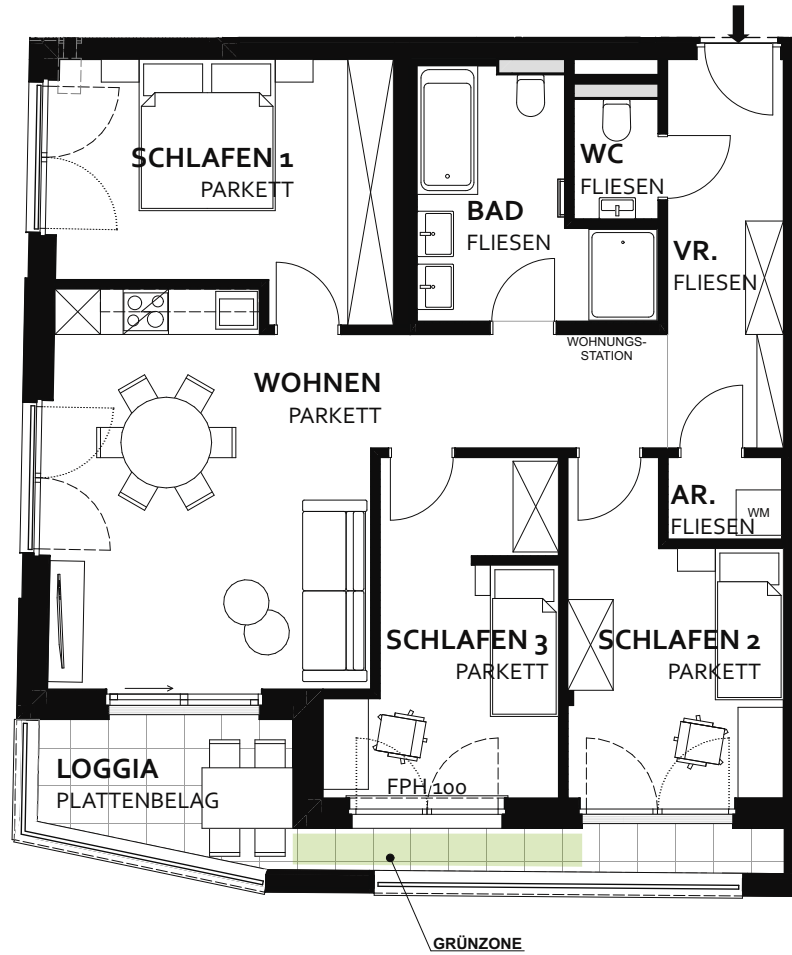


AR.	1,62 m ²
BAD	7,99 m ²
SCHLAFEN 1	13,92 m ²
SCHLAFEN 2	10,83 m ²
SCHLAFEN 3	11,47 m ²
VR.	7,87 m ²
WC	1,75 m ²
WOHNEN	27,35 m ²

GESAMT **82,80 m²**

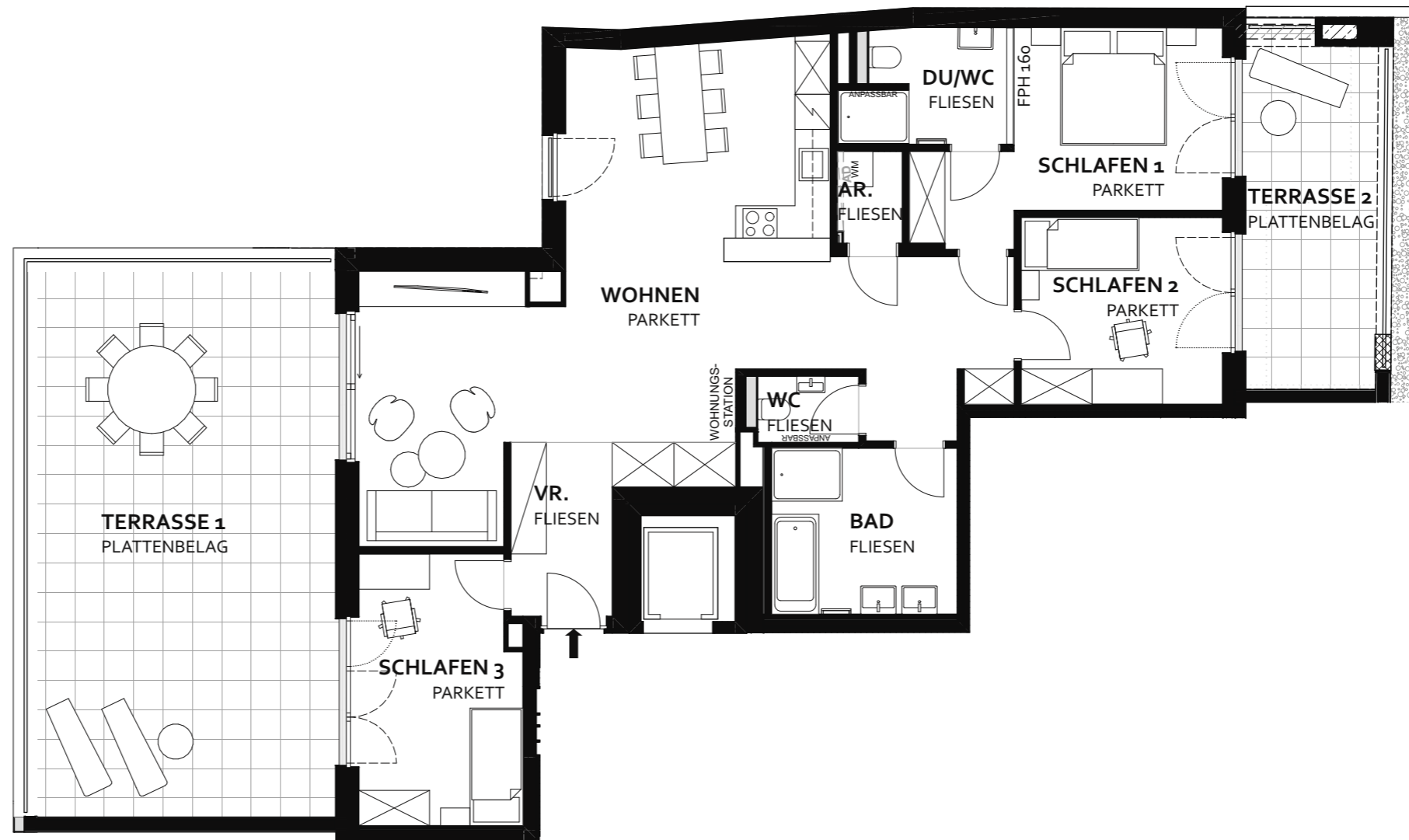
LOGGIA	9,44 m ²
KA 18	1,90 m ²

TOP 18
2.OBERGESCHOSS
Heinrich-Gruber-Str. 4
4050 Traun



Heinrich-Gruber-Straße





Heinrich-Gruber-Straße

AD Abgehängte Decke

TOP 20



AR.	1,69 m ²
BAD	8,90 m ²
DU/WC	5,07 m ²
SCHLAFEN 1	13,90 m ²
SCHLAFEN 2	10,86 m ²
SCHLAFEN 3	12,35 m ²
VR.	6,68 m ²
WC	1,93 m ²
WOHNEN	51,15 m ²

GESAMT	112,53 m²
TERRASSE 1	46,81 m ²
TERRASSE 2	14,97 m ²
KA 20	1,90 m ²

0 1 2 3 4 5 m

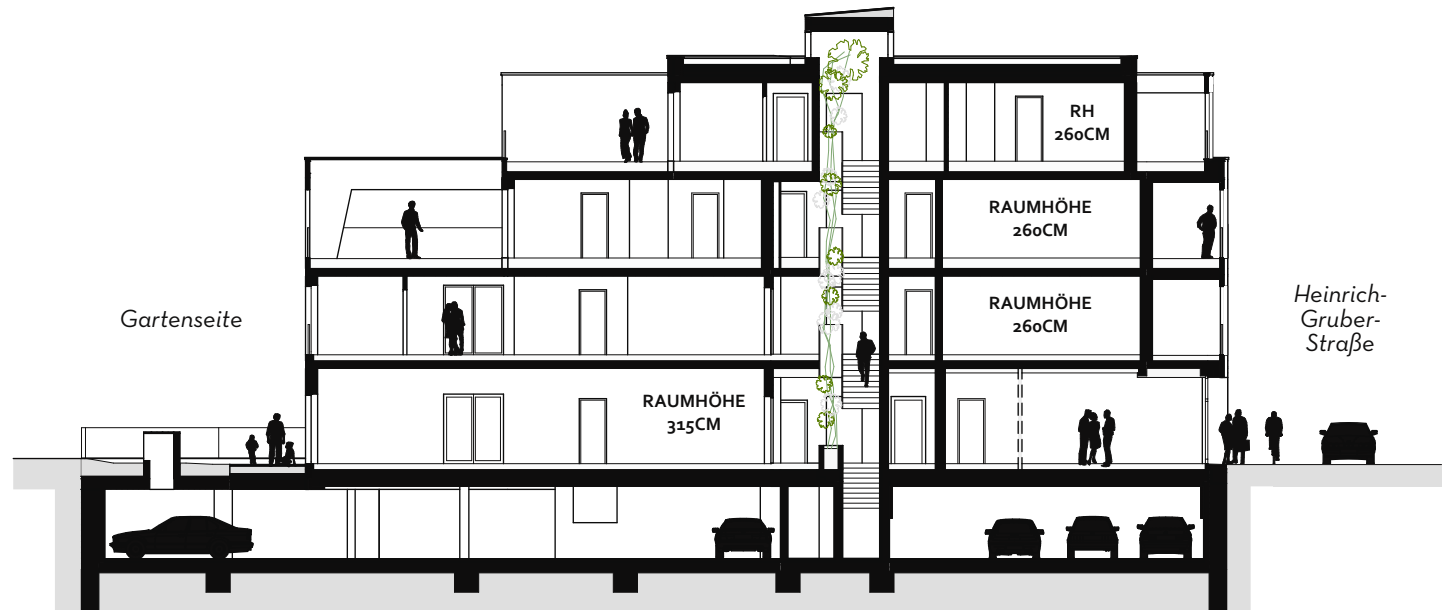


down
town



SCHNITT

Heinrich-Gruber-Str. 4
4050 Traun



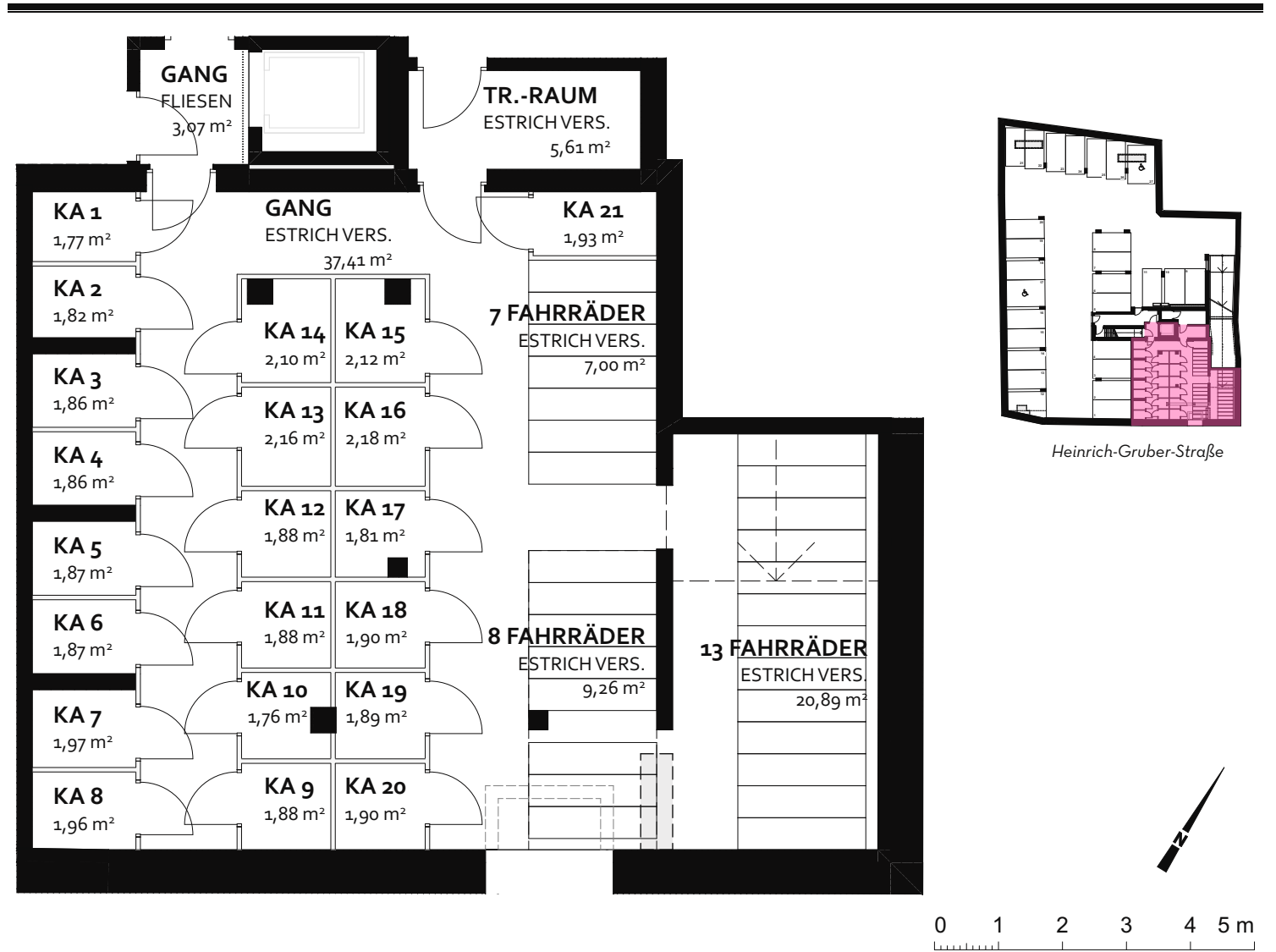
KELLER-/TIEFGESCHOSS

DETAILPLAN

Heinrich-Gruber-Str. 4
4050 Traun



KELLERABTEILE
FAHRRADSTELLPLÄTZE
TROCKENRAUM

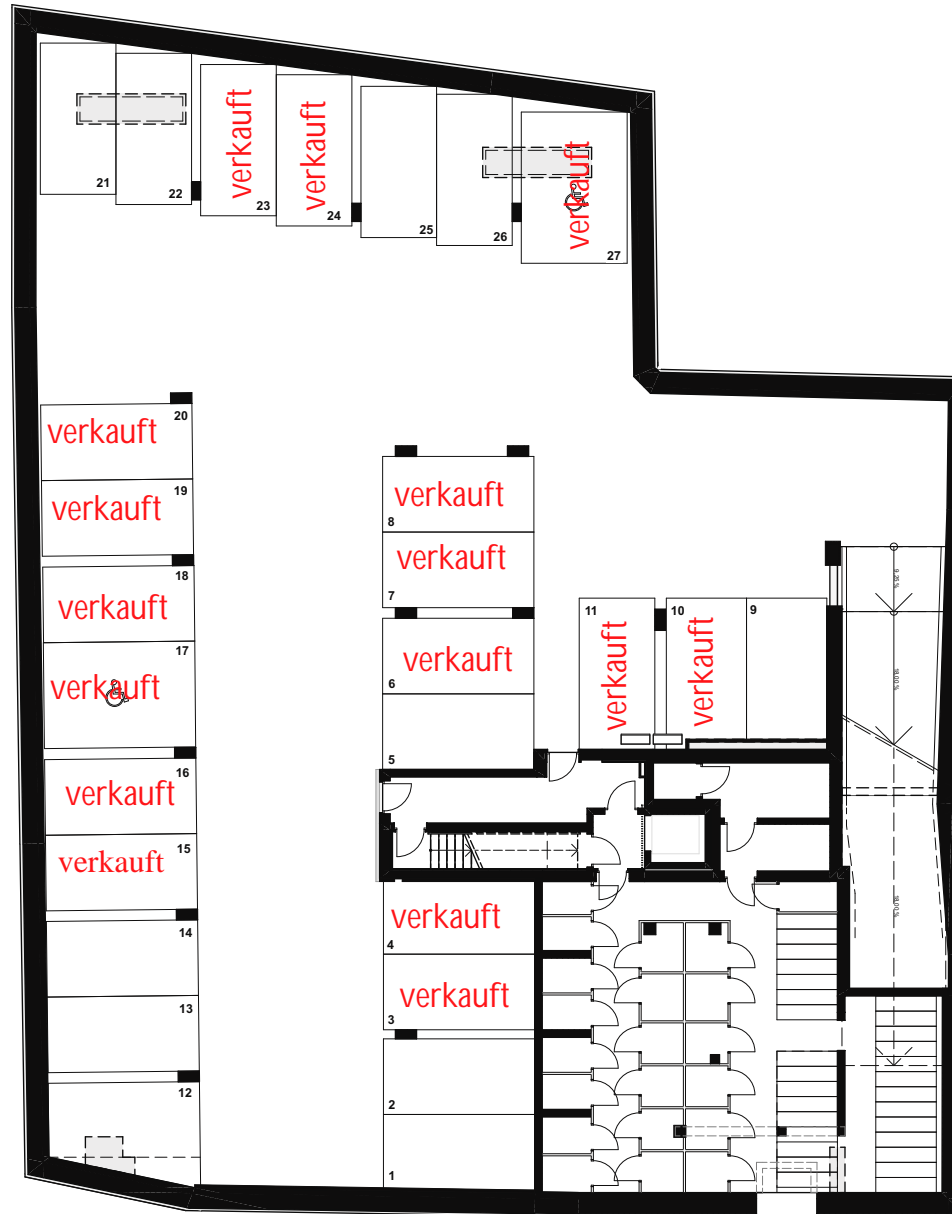


down
town



KELLER-/TIEFGESCHOSS
ÜBERSICHTSPLAN

Heinrich-Gruber-Str. 4
4050 Traun



Heinrich-Gruber-Straße

